

**66" LOVINA  
FREESTANDING  
ACRYLIC SLIPPER**

Cat. No.  
ATSN66EIG-XX



L: 66"  
W: 29"  
H: 22-1/2" - 26"

Water depth: 16-1/4" to top of tub  
Water depth 13-1/8" to overflow  
Overflow slot length: 3"  
Center drain to back of rim: 13"  
Bottom of drain to floor: 2-5/8"  
Bathing well to floor: 3-3/4"

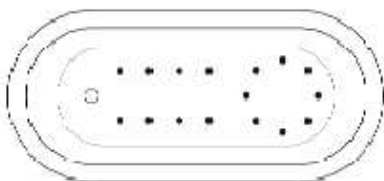
**The following is recommended for ATSN tubs:**

- Faucets: **#4602** or **#4604** or **7082**
  - Freestanding Bath Supplies: **#4502**
  - Freestanding Faucets: **#7932, 7934**
- (Do not Need Bath Supplies)**



For easier installation we recommend use of 5598-ITD Easy Install Rough-In Kit

Gallon Capacity: 41  
Shipping Weight: 142 lbs.  
Empty Weight: 82 lbs.  
Filled Weight: 431 lbs.



(Air jet configuration if system is added, more info on page 2.)

**Features:**

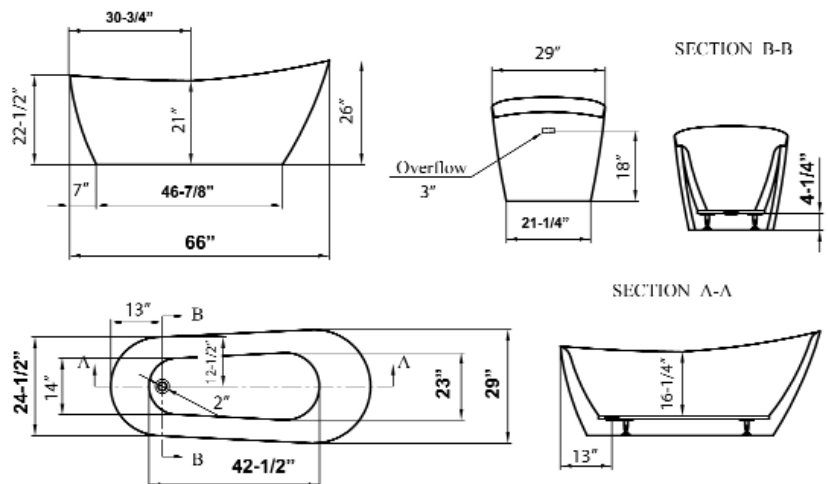
- ▶ Acrylic construction for lighter weight
- ▶ Drain and overflow covers included (available in 7 finishes)
- ▶ Overflow slot with integrated drain
- ▶ Drain included
- ▶ No faucet holes
- ▶ Angle slope of tub: 30°
- ▶ Includes built-in adjusters
- ▶ Tub is thoroughly inspected before shipment
- ▶ Option to add foam insulation between walls available
- ▶ IAPMO Certified
- ▶ **New:** Air jet system now available, more info page 2



**Finishes:**

- CP** Polished Chrome
- BN** Brushed Nickel
- ORB** Oil Rubbed Bronze
- PB** Polished Brass
- PN** Polished Nickel
- WT** White
- MB** Matte Black

**Custom Colors Available** (inside of tub is always white enamel):  
Painted bathtubs are considered "special order" and are not returnable  
\$160 Bisque or Black \$250 Designer Color



Dimensions of fixture are nominal and specifications subject to change without notice.

**BATHTUB  
AIR JET KIT**

Cat. No.  
AIR KIT 1, AIR KIT 2



- A** AIR JET - Bottom air jets for maximum bubble action.
- B** BLOWER - The heart of the massage system.
- C** MANIFOLD - Double back flow security prevention device.
- D** FLEXIBLE PVC HOSEING - IAPMO certified.
- E** MAIN AIR INTAKE HOSE - High temperature and pressure resistant.

**Air Kit is installed in tub before shipment**

**Features:**

- ▶ 750 Watt blower motor operates system
- ▶ 300 Watt air heater warms air
- ▶ System powered by 120V
- ▶ 16 brass air jets placed in bottom of tub
- ▶ Each air jet has 24 holes
- ▶ Air jet caps available in white (AIR KIT 1) or black (AIR KIT 2)
- ▶ Includes 1 1/4" x 3' main air hose plus 1 1/4" x 9' extension hose
- ▶ Automatic system purge after each use
- ▶ Automatic safety timer turns off system after 20 minutes
- ▶ Includes water tight remote control
- ▶ Compatible with most acrylic, copper and resin tubs with no feet
- ▶ Not available with cast iron tubs or tubs with feet

**INSIDE TUB VIEW - WILL VARY BY TUB DESIGN**

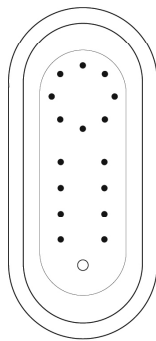


Air Jet

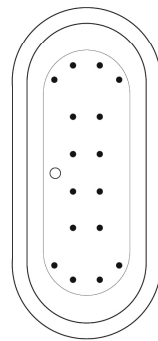


Remote

**Oval bathtub**  
Sample jet configuration

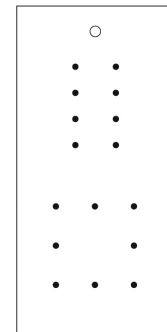


with end drain

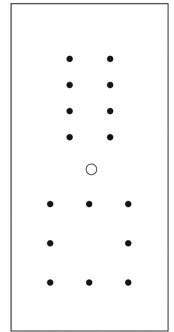


with center drain

**Rectangular bathtub**  
Sample jet configuration

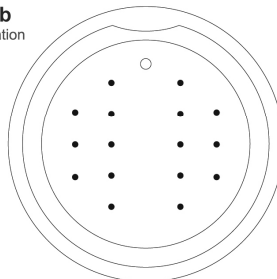


with end drain



with center drain

**Round bathtub**  
Sample jet configuration



These diagrams are general representations.  
Jet placement may vary dependent on tub shape

**Features:**

(16) Maxi Air Jets



Elbows for air jets



Tees for air jets